



## ARCTURUS SERIES



100W, 150W, 200W, 250W, 300W  
 140lm/W  
 Beam angle: 30deg, 60deg, 110deg  
 LM80, ISTMT and TM21 report available  
 5 years warranty  
 Wide range of lumen output package  
 from 14,000lm up to 42,000lm



## Construction

Housing is low copper die-cast aluminum, heavy duty, structurally rigid and vibrantly dissipating heat for longer lumen maintenance life-hours. Housing is finished mini texture charcoal gray using polyester powder coat. Other optional finishes are available upon request.

## Optical System

Largest selection of optical choices shall be available to fit your applications. Please specify your selection from the ordering guide. Photometric Application Data table is provided as an additional tool for selecting an appropriate optic system suitable to the application.

## Product Applications

- Landscape lighting
- Building facade/Column light
- Statue/art painting display spot light
- Very long throw narrow High power flood light
- Very cold environment flood light

## User Friendly Driver Compartment

The driver compartment with built-in connectors not only serves the purpose to protect the driver but also function as a junction box to provide enough space for easily wiring. In addition, simply flip the hinged door of the driver compartment by loosening two screws only save the operation time on site.

## Loop In/out Connection

Two reserved cable outlets are available for loop in/ out connection, DALI dimming and 1-10V dimming.

## Robust Bracket With Tick Marks

Incremental 30deg tick marks are provided in the casting of a single hex head bolt to allow for precise aiming and to facilitate the alignment of multiple luminaires.



## Glare Restriction

The visor is provided to effectively trim the spilling light and reduce light pollution which helps to eliminate the negative impact on the resident living nearby.

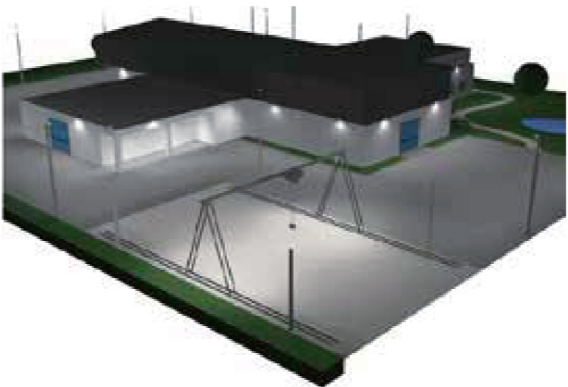
## Wire Guard To Protect The Fixture

The stainless steel wire guard is designed to protect the fixture from hitting by high speed objects such as flying birds or balls.

## DiaLux Simulation

Loading and unloading areas  
EN 12464-2 Requirement

E <sub>m</sub>	U <sub>o</sub>	GRL	R <sub>a</sub>
50	0.4	50	20

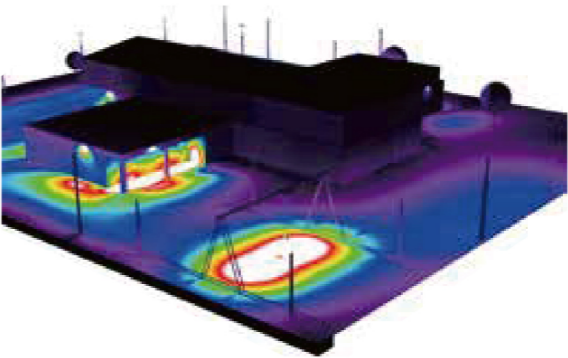


### Luminaire Data

Model name	DG-AT01-100W
Luminous flux (Luminaries)	14190lm
Luminaire wattage	98.8W
Beaming angle	100deg
R <sub>a</sub>	>70
Qty. being Used	2 pcs

### Simulation Data

E <sub>av</sub> [lx]	100
E <sub>min</sub> [lx]	54
E <sub>max</sub> [lx]	131
U <sub>o</sub>	0.543
E <sub>min</sub> / E <sub>max</sub>	0.416



## ARCTURUS LIGHT

- 100W, 150W, 200W, 250W, 300W
- 130lm/W, 140lm/W
- Beam angle: Symmetric & Asymmetric
- Available LM80, ISTMT and TM21 report
- 5 years warranty
- 10kv surge protection
- Wide range of lumen output package from 14,000lm up to 42,000lm

## Designed To Use For :

- Indoor/ outdoor sports arenas
- Stadiums Roadway
- Parking
- Billboards
- Facade
- Corridor
- Warehouse
- Convention store
- Big-box retail store
- Cold storage facilities
- Gymnasiums
- Natatoriums

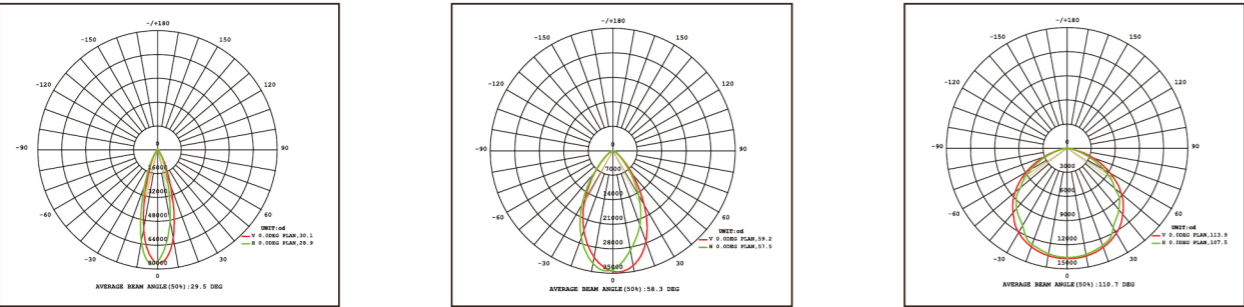


Product Parameter

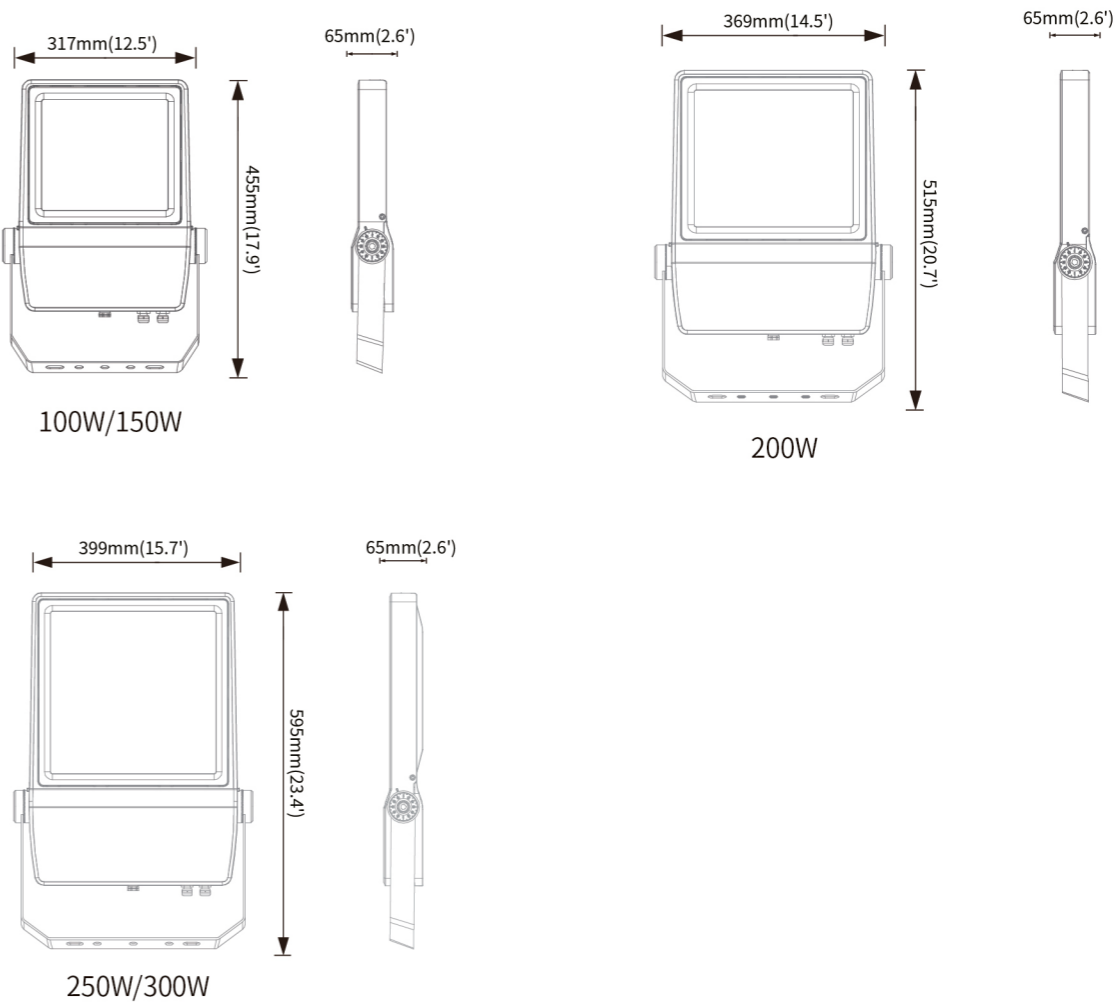
Part Number	DG-AT01-100W	DG-AT01-150W	DG-AT01-200W	DG-AT01-250W	DG-AT01-300W
Wattage	100W	150W	200W	250W	300W
Lumen Output	14000lm	21000lm	28000lm	35000lm	42000lm
Light Efficiency	140lm/w				
Dimensions(mm)	317*455*65	317*455*65	369*515*65	399*595*65	399*595*65
CRI	>Ra70, >Ra80				
CCT	3000K, 4000K, 5000K, 5700K, 6500K				
Input Voltage	100-240Vac, 100-277Vac, 50-60Hz, PF≥0.95				
IP Rating	IP66				
LED Driver	Meanwell, Sosen, Philips				
Working Temperature	-30°C to +50°C				
Lifespan	>50,000Hrs				

Light Distribution

The Arcturus lens cover diffuses the dazzling light generated by individual leds and shed a gentle beam creating a harmonious lighting environment.



Outline Drawing



Intelligent Control Option

- Dali Control
- 1-10V Dimming Control
- Occupancy Control
- DMX Control